

# THE PROFESSIONAL EXCHANGE



## INLAND EMPIRE CHAPTER OF CAMFT

(California Association of Marriage and Family Therapists)

MARCH 2009

### MONTHLY MEETING

Friday, January 23, 2009 (The "Fourth Friday")

Coffee and Networking: 8:00 am  
Program: 8:30 am - 10:30 am

Loma Linda Marriage & Family Therapy Clinic  
164 W. Hospitality Lane, Suite 15  
San Bernardino, CA. 92408

### VICTIM ADVOCACY SERVICES

Presented by Janet Hulse, Supervising Victim Advocate II,  
San Bernardino District Attorney Office on Victim Advocacy Services

According to the San Bernardino District Attorney's (DA's) office (<http://www.sbcounty.gov>), in the past, victims of crime often felt that they had few rights and too little support navigating a confusing legal system. Now, the Victim Services Unit helps to link witnesses and survivors to counseling and support services in the community, to short-term emergency services, and possibly to compensation for expenses related to the crime. They also help victims work with the DA's office and with law enforcement. The unit can be reached at 909-387-8309.

*This Presentation's Objectives — Attendees Will:*

1. Receive an overview of the Victim Services program and details about the types of services offered.
2. Learn about Victim Compensation, including:
  - A. The claim process,
  - B. Eligibility,
  - C. Benefits available,
  - D. And, the billing process.

*About the Speaker:*

Janet Hulse has spent more than a decade working with victims and witnesses in the Inland Empire. Her position has given her experience and specialized training to work with survivors of child abuse, of domestic violence, and of elder abuse.

#### CHAPTER EVENTS TO REMEMBER

- Friday, March 27, 2009: "Victim Advocate Services" — Janet Hulse, San Bernardino District Attorney Office on Victim Advocacy Services
- Friday, April 24, 2009: "CAMFT Update" — Mary Riermesma
- Friday, May 22, 2009: "Sexual Addiction" — Rebecca Deighan, LMFT

#### BOARD OF DIRECTORS

Past President  
Garry Raley (951) 640-5899

President  
James Billings (909) 763-4976

President Elect  
Ruth Dusenberry (951) 961-4792

Membership  
Ginger Gabriel (909) 338-6968  
and Pam Hart (760) 900-3852

Financial Officer  
Benjamin Zinke (626) 665-5070

Secretary  
Tomoko Misawa (909) 646-0739

Board Member At Large  
Carolyn Dodd (951) 212-5003

Board Member At Large  
Ginger Gabriel (909) 338-6968

Board Member At Large  
Sarah Nunley (951) 202-7727



#### INSIDE THIS ISSUE:

|                     |     |
|---------------------|-----|
| PRESIDENT'S MESSAGE | 2   |
| CHAPTER NOTES       | 3   |
| UPCOMING EVENTS     | 4   |
| ADVERTISEMENTS      | 5&6 |
| MEMBERSHIP FORM     | 7   |



It has been my pleasure to serve as president of the chapter for the last year. March is the month we nominate new board position to start April 1. With this being my last President's Message, I would like to briefly touch on a couple things:

- 1) **Law and Ethics Workshop:** I would like to thank all those that came out to our annual Law and Ethics Workshop. We had the largest turn out ever this year, close to one hundred therapists. I would like to personally thank our President Elect, Ruth Dusenberry, for all her hard work and planning, making this such a successful event.
- 2) **New Chapter President:** Starting next month, Ruth Dusenberry, LMFT will be our new chapter president. I have personally worked with Ruth at Catholic Charities for several years. She brings with her a wealth of experience working on boards and committees, but more importantly, she brings with her a sincere compassion for the work we do as therapists. I am confident and excited that under Ruth's leadership this chapter will continue to grow and thrive, meeting the needs of MFTs throughout the Inland Empire.
- 3) **New CAMFT Bylaws:** As some of you may recall we, along with many other chapters, sent a letter to CAMFT and asked them to reverse their recent decision regarding the restrictions they placed on who could be part of local Chapter boards. The CAMFT board did hear our concerns. With that in mind, I wanted to remind everyone of the upcoming vote on a proposed revision to the CAMFT bylaws concerning the composition of chapter

boards. This is an important vote — we strongly **encourage you to vote in favor!** A favorable vote will... *"permit no more than 35 percent of a Chapter's Board of Directors to be CAMFT associate members or prelicensed members who will have the ability to vote while on the Board. Associate or prelicensed members may not serve as president elect, president, or past president. In case of necessity, however, a chapter would be able to request a variance from the CAMFT Board if the provision indicated above is not achievable. Such request is granted solely for a one year period. If a variance is needed in a subsequent year, it would require a separate request of the CAMFT Board."*

- 4) **The Chapter is Growing:** As this chapter continues to grow, there is also a continued need for more volunteer support in board and committee members. Please talk with any board member or myself and let us know if you would like to help in a small way to support the chapter by joining the board or a committee.

Thank you all for the opportunity to serve this last year as your President. I look forward the continued success of this chapter in the years to come.

Chapter President,  
James Billings, Ph.D., LMFT

## PRESIDENT'S MESSAGE



## "The Future is Not an Optional Event — Make Yours Intentional"

"Outstanding" is the word that comes to mind to describe my experience attending this years Chapter Leadership Conference hosted by CAMFT. The day began with CAMFT and legislative updates by Mary Riemersma. The next presenter, J.P. O'Conner, spoke on strategic thinking and planning. She inspired us to develop chapter vision and goals to promote our members, our organization, and our profession. The afternoon breakout sessions covered various topics, Financial Management, Technology/Website Issues, and Marketing, to name a few. I attended the Presidents Council Forum and Membership Recruitment. Both were informative and offered networking opportunities.

The entire day was filled with great information and inspiration; as incoming Chapter President I look forward to sharing these with our chapter over the next year.

— Ruth Dusenberry, President Elect

## PRESIDENT ELECT'S MESSAGE

## CHAPTER NOTES

### ***Board and Committee Nominations Are Open! Elections to be Held March 27, 2009!***

Nominations will be accepted from the floor at the next Chapter Meeting  
and positions become effective on April 1, 2009.

Please feel free to also contact any Board member to submit a nomination or if you are willing to serve.



### ***Committee Invitations***

The IE-CAMFT Board would like to invite interested members to join our Website Committee. This will be a temporary committee with the goal of upgrading our chapter website. If you have an interest, please contact President-elect, Ruth Dusenberry, 951-961-4792, [ruthd616@aol.com](mailto:ruthd616@aol.com).

We would also like to invite you to help with the newsletter. You can help by assisting in publication formatting, writing articles, compiling email lists, contacting advertisers, or keeping us updated with upcoming events. Please contact Ruth or Heather, [hbryga@familyservicervca.org](mailto:hbryga@familyservicervca.org).

### ***A Successful Law and Ethics Seminar***

“Another stellar presentation!” “He is awesome...” “Great presentation!” — These were a few of the comments made by attendees at our annual chapter Law and Ethics workshop. “David (Jensen) was a wonderful presenter making a subject that could be cut and dried, lively, entertaining and very helpful!” Ninety-five professionals attended the workshop; all came away from the day better informed and better prepared to deal with the challenges we all face in our work with others. Mark your calendars now for next year’s workshop, February 2010!

— Ruth Dusenberry, President Elect

### ***“ASK BEN”***

The Board encouraged Ben Zinke to establish a pre-licensed exchange in the newsletter, giving interns and trainees a forum to discuss issues they often face. Please email your questions to Ben at [ztherapist@gmail.com](mailto:ztherapist@gmail.com)

### ***Membership Information — Dues Renew in April***

Membership to the Inland Empire Chapter of CAMFT requires a membership in CAMFT —there are multiple benefits to belonging to both. For more information on membership benefits or how to join, see page 9, or contact Pam Hart or any board member for assistance. Phone numbers are on the first page of the newsletter. Dues are due by April. Please renew to continue your newsletter.

### ***Notable Resources***

For those looking for a way to advertise an existing group, or for those looking for a referral for clients, take a look at <http://www.findgrouptherapy.com/>. This website started as a resource for northern California, but is expanding to serve all areas.

You can also access local groups by calling 2-1-1. — Submitted by Ruth and Heather



## UPCOMING EVENTS

### Childhood Grief and Traumatic Loss

Conference in Los Angeles, March 26, 2009

Information at

<http://ican-ncfr.org/documents/Grief2009SaveTheDate.pdf>

### Call for Nominations:

#### “Teen Hero:” Magic of Believing Award

Deadline April 2, 2009

Do you know a teenager that goes above and beyond in their lives, their families, their community? Do they give back to others and really make a difference in the world around them? The winner will be announced and the award will be given out on May 21 at the 36<sup>th</sup> Annual Riverside County Children’s Conference (see below). Eligible nominees are currently under the age of 19 and live/reside in Riverside or San Bernardino Counties.

Contact Robyn Freeman at 951-369-8036.

### The 10<sup>th</sup> Annual Case Management Symposium

#### “Case Management in a Multi-Cultural Environment”

Thursday, April 23, 2009

Riverside County DPSS Training Facility, Moreno Valley  
Sponsored by CSUSB, School of Social Work

Exploring cross-cultural engagement, consensus building practices, case management knowledge and skills, and culturally competent practices.  
For professionals, paraprofessionals and volunteers who work in large and small private and public agencies.

Please contact Deanna Rinebolt, [drinebol@csusb.edu](mailto:drinebol@csusb.edu).

### Call for Resources

- Donate counseling to veterans — they receive pro bono services and, in exchange, the veteran chooses from a list of community agencies where they may volunteer their time. See [www.giveanhour.org](http://www.giveanhour.org).
- If you have experience treating families with military service (with or without PTSD expertise), call or email State CAMFT.
- Mental Health Network Government Services is also recruiting professionals as Marriage and Family Life Consultants — <http://www.camft.org/mhnservices.htm>.

### Redlands Psychodrama Classes

Fridays at 7:30 p.m. in the Youth Room,  
at the University United Methodist Church,  
940 E. Colton Ave., Redlands.

Free to attendees. Guests welcome. CEU and psychodrama credits available.

For information, contact Don Miller at (909) 798-2765

### Traveling Through OZ: Journey Home in Sand-play and Play Therapy

Orange Co Chapter of the CA Assoc. for Play Therapy

Saturday, April 23, 2009 in Irvine

Distinguished Presenter, Gita Morena, PhD

Thursday, May 21, 2009 at Cal Baptist University in Riverside

Contact Jennifer Wentz, [jenniferwentz@hotmail.com](mailto:jenniferwentz@hotmail.com), or

Renna Patel, [patel.reenac@yahoo.com](mailto:patel.reenac@yahoo.com)

### Children’s Conference

#### “Fostering Care Across Communities”

Thursday, May 21, 2009 at Cal Baptist University in Riverside

For professionals, teens, and caregivers. Keynote Speaker: Dr. Faith McClure. Teen Hero Awards.

Workshops related to foster children and the foster care system: law and ethics, grandparents raising grandchildren, core issues in adoption, grief and loss, preparing children for adulthood, IEPs, child abuse, teen dating violence, team decision making, mandated reporting, cultural competency, using art therapy, and setting limits.

CEUs available.

Call 951-686-3706 for information and registration.

### International Conference on Violence, Abuse and Trauma,

#### “Promoting Peace in the Home, Your Community, and the World: Linking Practice, Research, and Policy Across the Lifespan”

September 21 - 26, 2009, San Diego

Contact information: 858-527-1860 ext. 4030 or

[ivatconf@alliant.edu](mailto:ivatconf@alliant.edu);

also see [www.IVATCenters.org](http://www.IVATCenters.org)



### Redlands Office Space ~Furnished or Unfurnished~

Peaceful and stylish furnished inner office for lease in Redlands—with waiting room, and utilities included. Easy I-10 freeway access. The office can be used 7:00 to 10:00 mornings, all day Fridays, and weekends, at \$65/day. Another office in the suite is unfurnished and available for full time use at \$600/month—utilities and waiting room included. Call (909) 226-5541

*FREE YOURSELF FROM INSURANCE WORRIES!!!!*

*We deal with your insurance companies*

Quick Processing and Pay, Consistent and Reliable, Reasonable Rates,  
References Available

***We make life easier for you!!!!***

Liz Scudder @ [Escudder4@aol.com](mailto:Escudder4@aol.com), (562) 335-7167 – Mobile  
or (951) 778-0149 - Office



Sandra Keller

- Claim Submission/Tracking
- Client Benefit Inquiry
- Apply to Join Insurance Panels
- And Much More

For more information...

Cell: 714-454-1030

E-mail [jasaha@charter.net](mailto:jasaha@charter.net)

[www.germentalhealthinfo.com](http://www.germentalhealthinfo.com)

**Support Services  
For Mental Health  
Providers**

### Paid MFT Internships

Fulltime positions with Temecula area residential treatment facilities for male/female populations, ages 6-17.

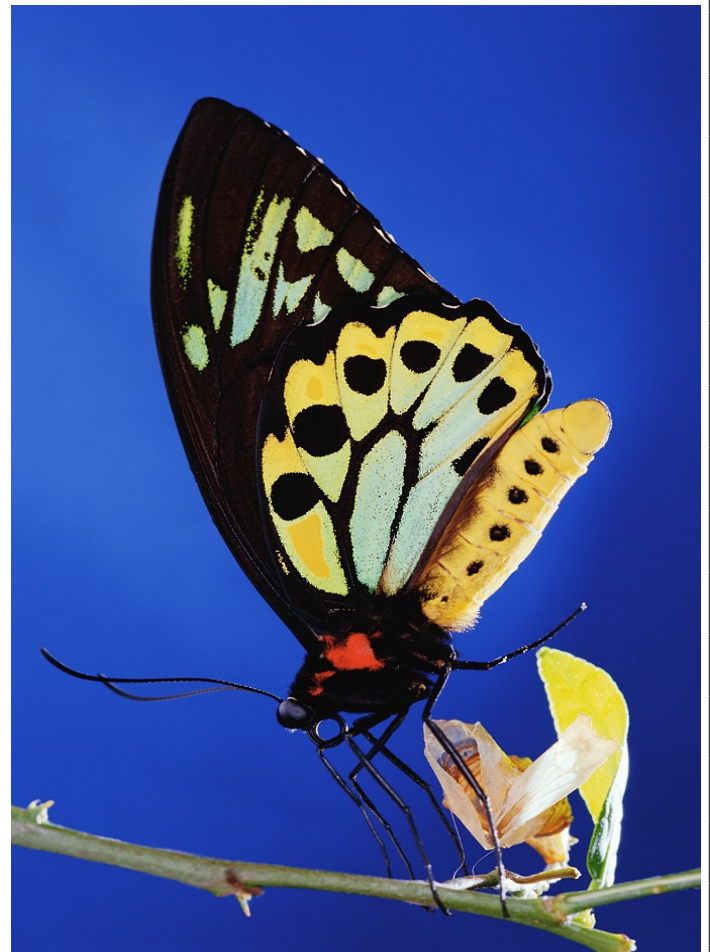
Supervision and training provided. Paid vacation and medical/dental benefits.

Contact Bob Weck at 1-800-404-5516, ext. 213 for details

### CAMFT Annual Conference

April 30 through May 3, 2009 in San Jose

More information, following the link on CAMFT's website: [http://www.camft.org/scriptcontent/index.cfm?displaypage=../Conf\\_Workshops/2009Con/Greeting.htm](http://www.camft.org/scriptcontent/index.cfm?displaypage=../Conf_Workshops/2009Con/Greeting.htm).



## DISPLAY ADS RATES

### BUSINESS CARD SIZE:

MEMBERS: \$10, NON-MEMBERS: \$20

1/4 PAGE: MEMBERS: \$20, NON-MEMBERS: \$40

CLASSIFIED AD RATES: Members: free

### CLASSIFIED AD RATES: NON MEMBERS:

ONE MONTH: \$20

3 MONTHS: 10% OFF \$54

6 MONTHS: 25% OFF - \$90

12 MONTHS: 40% OFF - \$144



**MEMBERSHIP APPLICATION****Inland Empire - CAMFT**

Name and Degree \_\_\_\_\_

Address \_\_\_\_\_

City \_\_\_\_\_ State \_\_\_\_\_ Zip Code \_\_\_\_\_

Telephone Number ( ) \_\_\_\_\_ Fax Number ( ) \_\_\_\_\_

E-Mail Address \_\_\_\_\_

Business Name \_\_\_\_\_ Business Telephone Number ( ) \_\_\_\_\_

CHECK ONE: \_\_\_\_\_ New Member, IE-CAMFT \_\_\_\_\_ Renewal, IE-CAMFT

CAMFT Member# \_\_\_\_\_ \_\_\_\_\_ Active \_\_\_\_\_ Inactive

**MEMBERSHIP CATEGORIES (CHECK ONE)**

\_\_\_\_\_ Clinical (Licensed).....\$40

\_\_\_\_\_ Pre-licensed (Trainee, Intern, Social Worker Associate).....\$25

\_\_\_\_\_ Associate (Licensed in a related mental health field).....\$40

\_\_\_\_\_ Affiliate Practitioner in another field (e.g., RN, Attorney).....\$40

Must be a member of CAMFT to join the local chapter, (unless Affiliate member)

Dues are paid annually in **April**. MAKE CHECKS PAYABLE TO IE-CAMFT

Send this form with check to: Inland Empire Chapter of CAMFT  
9708 SVL Box  
Victorville, CA. 92392

IF YOU ARE A MEMBER OF CAMFT,  
YOU MAY JOIN OUR LOCAL CHAPTER.

**BENEFITS INCLUDE:**

- Networking
- Free 2 CEU 's at 9 Monthly Meetings. Reduced Cost for 6 CEUs for Law and Ethics
- Staying Connected to Other Therapists
- Low Cost Advertising
- Developing Peer Relations and Being Less Isolated
- Giving and Receiving Consultation and Referrals
- Becoming More Educated

**IE-CAMFT Mission Statement**

**We are professional visionaries dedicated to providing training, networking, and advocacy for Marriage and Family Therapists to promote healthy individual, couple and family relationships.**



INLAND EMPIRE CHAPTER OF  
CAMFT NEWS

Inland Empire—CAMFT  
9708 SVL Box  
Victorville, CA. 92392

---

We're on the Web!  
[www.ie-camft.org](http://www.ie-camft.org)

---

***This newsletter is emailed  
to all members unless a  
hardcopy is requested.***

**COMMITTEE POSITIONS**



**Membership:** Pam Hart – (760) 900-3852 and  
Ginger Gabriel – (909) 338-6968

**Hospitality:** Open

**Networking Lunches/Socials:** Wendy Hallum – (909) 239-8051

**Newsletter Editor:** Heather Bryga – [hbryga@familyservicerivca.org](mailto:hbryga@familyservicerivca.org)  
or (951) 686-3706

**Program Chair:** Sheri Rambarose – (951) 778-3970 and  
Garry Raley – (951) 640-5899

**CEU Coordinator:** Carolyn Dodd – (951) 212-5003

**Trauma Response Network Chapter Coordinator:**  
Carolyn Dodd – (951) 212-5003

**Webmaster:** Garry Raley – (951) 640-5899

If you are interested in serving on a committee, please contact James Billings  
or any board member.

Inland Empire Chapter of CAMFT  
(California Assoc. of Marriage & Family Therapists)  
9708 SVL Box  
Victorville, CA 92392